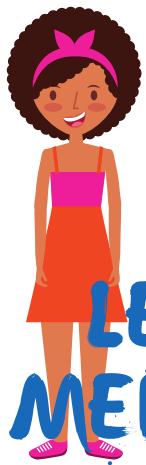


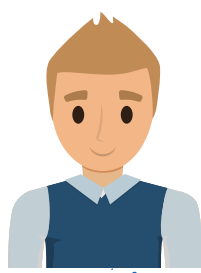
# PWCS MENTOR PROGRAM DEFINITIONS

All Mentor Program participants should have the same understanding of key terms & participants, defined below.



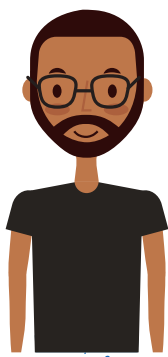
## LEAD MENTOR

- teacher-leader w/mentoring experience
- monitors & meets w/school-based mentors
- monitors & meets w/novice educators
- coordinates school's monthly Educator Support Sessions (ESS)
- attends 4 lead mentor meetings per/year, OPD 825
- leads school's Educator Support Team (EST)



## MENTOR

- exemplary professional educator
- at least 3 years' teaching experience
- trained via PWCS Mentor Institute, OPD 824
- works 1-on-1 w/ 0-experienced educator
- must submit digital mentor logs
- meets at least weekly w/novice educator
- provided stipend for logs submitted
- earns recertification points based on logs



## MENTEE

- zero-experienced educator
- matched with school-based mentor
- meets weekly with mentor
- attends monthly school-based ESS's
- may be late hire from previous year who is completing first full year as educator
- colleague of mentor and lead mentor
- attends various PD for novice educators



## EDUCATOR SUPPORT TEAM

- committee w/lead mentor, administrator, & other professional educators
- might be school's leadership team
- designs and guides school's support for mentees & other novice educators
- meets as needed, possibly 4 times per year
- includes variety of instructional specialists, content area educators, & mentors



## EDUCATOR SUPPORT SESSION

- monthly, school-based learning
- coordinated by school's lead mentor
- professional learning opportunities
- meets needs of building's novice educators
- resources for LM in One Note notebook
- sessions led by various experts
- novice educators must attend
- second & third year educators invited

**PWCS Connect Mentor & Induction Program**  
*Office of Professional Learning*  
**2018-19**